



HealthForce Minnesota
Healthcare Workforce Commission

October 15, 2015

HealthForce Minnesota
Transforming education. Advancing practice.

MnSCU Centers of Excellence

- Created in 2005 as an initiative of the Governor with funding of \$5 million per year
- Initially, four centers were designated through a competitive process
- There are now eight centers in six industries:
 - Health care
 - Manufacturing and engineering
 - Information technology
 - Agriculture
 - Energy
 - Transportation

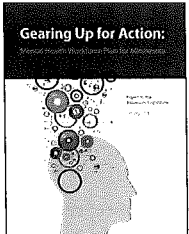



www.HealthForceMinnesota.org

HealthForce Minnesota
Transforming education. Advancing practice.

Mental Health Workforce Development Plan

- Steering Committee (37 members) created and convened monthly
- 20 regional forums held throughout MN
- 24 consensus-based recommendations
- 9 recommendations completed or in progress

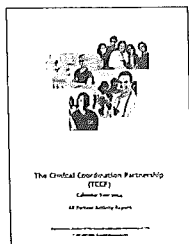


www.HealthForceMinnesota.org

HealthForce Minnesota
Transforming education. Advancing practice.

The Clinical Coordination Partnership

- 100+ clinical site and education members
- 15,000+ pre-licensure experiences scheduled
- Online portal for educators, clinical sites, and students
- Clinical sites report 75% time savings upon use of TCCP
- Expanding to Nurse Practitioner and Physician Assistant
- Piloting Student Passport to assist with tracking student information

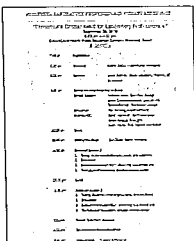


www.HealthForceMN.org

HealthForce Minnesota
Transforming education. Advancing practice.

MN Clinical Laboratory Workgroup

- Monthly meetings of MLT and MLS educators and laboratory professionals
- Piloted simulated clinical experience for blood bank and microbiology
- Held 3rd statewide summit on 9/25/15 attended by 80+ people
- Working to ensure strong pipeline of laboratorians



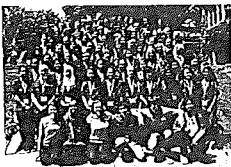
www.HealthForceMN.org

HealthForce Minnesota
Transforming education. Advancing practice.

Scrubs Camp

High School Scrubs Camp

- 6 camps
- 344 total students
- 190 received scholarship
- 50% non-White
- 93% reported camp helped them focus on future career goals



Middle School Scrubs Camp

- 3 camps
- 125 total students
- 41 received scholarship
- 40% non-White



2016 Scrubs Camps

- 8 high school camps
- 7 middle school camps
- 1 Center of Excellence camp

www.HealthForceMN.org

HealthForce Minnesota
Transforming education. Advancing practice.

Health Care Core Curriculum

- 4-credit course
- Educate the Educator model
- Designed for high school and college use
- Available online
- 7 modules
- Approved nursing assistant curriculum when combined with 2-credit skills course
- Used by 20 high schools and 9 colleges in 2015-16 academic year



www.HealthForceMinnesota.org

HealthForce Minnesota
Empowering education. Advancing practice.

Nursing

- Provided start-up funding for the development of the MANE curriculum
- Accreditation consultation to MnSCU ADRN and PN programs
- Worked with faculty to develop Practical Nursing Framework curricula
- Ecumen grant to increase recruitment and retention of nurses in LTC setting



www.HealthForceMinnesota.org

HealthForce Minnesota
Empowering education. Advancing practice.

HEIP Partnership Council

- Has been meeting every quarter since 1998
- Employer-focused
- Chaired by Laura Beeth
- Employers - Fairview, Allina, HealthPartners, Regions, Mayo, Essentia, North Memorial, VA, CentraCare, Lakeview HCC, Monarch Healthcare
- Associations - MHA, Leading Age, CareProviders, MN HomeCare
- Education - MnSCU, UMN, Private Colleges
- Agencies - MDH, DHS, DLI, DEED, MDE, GWDB
- Other - NRRHC, MRHA, HOSA, BON, Sen. Franken's office



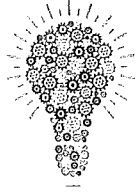
Healthcare Education Industry Partnership

www.HealthForceMinnesota.org

HealthForce Minnesota
Empowering education. Advancing practice.

Future Work and Innovation

- Offering HCCC in online asynchronous model
- End-of-course assessment for HCCC
- CTE Licensure for medical careers
- Inclusivity/Culture Competency
- PIPELINE psychiatric tech dual-training
- TCCP expansion
- Simulation coalition
- Partnering to meet workforce challenges



www.HealthForceMinnesota.org

HealthForce Minnesota
Transforming education. Advancing practice.

Future Work and Innovation



Mental Health Work Plan Implementation

- *Recommendation 11:* Cultural Competency task force to examine training and education provided at student and practitioner level
- *Recommendation 6:* Co-convene Minnesota's higher education institutions to assess availability of higher-level mental health degree programs in rural areas of the state.

Recommendation 21: Identify gaps in the educational, certification, or licensing systems that impede career movement... Identify challenges of and barriers to incorporating persons in recovery and persons of diverse cultural backgrounds into traditional career ladders. Develop strategies, curricula, certifications to support these pathways.

www.HealthForceMinnesota.org

HealthForce Minnesota
Transforming education. Advancing practice.



Valerie DeFor
Executive Director
HealthForce Minnesota
vdefor@winona.edu
507-429-6652

www.healthforceminnesota.org

HealthForce Minnesota
Transforming education. Advancing practice.
